

# FS-9130DN

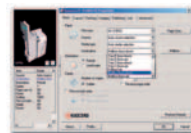
► print ► copy ► scan ► fax

A3 MONOCHROME DEPARTMENTAL PRINTER

## READY TO TAKE CARE OF ANY WORKLOAD.

With a print speed of 40 pages per minute in A4, the Kyocera FS-9130DN is ready to carry you through the heaviest of loads without slowing down. Fast, efficient and reliable, this printer also has a highly functional modular design. The paper and finishing options make it easy to fit the printer to your department's precise needs.

- 40 pages per minute in A4, 23 pages per minute in A3
- 64MB memory standard, upgradeable to 576MB
- Duplex and network connectivity as standard
- PDF direct printing from USB Flash Memory devices
- Wide range of paper options
- Long-life components and easy maintenance



Easy network access for the entire office is standard. The Kyocera KX Driver works behind the scenes to ensure uncomplicated handling.

This printer has the capacity to work fast. Space for an input of 1,200 sheets and for 500 sheets of printouts are standard.



# FS-9130DN

## A3 MONOCHROME DEPARTMENTAL PRINTER



ECOSYS devices are designed to minimise both direct costs and indirect costs such as maintenance, administration and consumables. The cartridge-free system requires only the toner to be replaced. The modular design concept allows you to add workflow enhancing functions and a wide variety of paper handling capabilities as required. Integrated system software provides long-term cross-network compatibility. Kyocera's long-life components cost you and the environment less.

### System platform:

The FS-9130DN offers USB, parallel and network connectivity as standard and delivers problem-free system administration. Kyocera's single platform technology means that the same driver can be used for every Kyocera PCL/PostScript print device on the network: from single-user desktop printers to high-end multifunctional systems. Only Kyocera offers this effortless combination of IT sophistication and high-performance paper handling expertise.

### PRESCRIBE IIe:

With the Kyocera page design and control language PRESCRIBE IIe, even complex graphics, logos and forms (even multipart forms) can be created independently of the system and saved and updated in the printer. Consequently, integration into print files no longer applies. They are only accessed as required and therefore relieve the load on the network.

### KM-NET for Client/KM-NET Viewer:

The settings of all printers on the network can be checked visually and amended from any Windows PC. KM-NET for Client enables easy setup and check of the printer status via parallel, USB and network connection. KM-Net Viewer is an advanced printer management software tool using the standardised protocol SNMP.

### GENERAL

**Technology:** Kyocera ECOSYS, Laser  
**Engine speed:** Max. 40/23 pages per minute A4/A3 simplex, max. 33/16 pages (16/8 sheets) per minute A4/A3 duplex  
**Resolution:** 1,200 dpi quality (1,800 x 600)  
**Time to first page:** 3.5 seconds  
**Warm-up time:** 60 seconds from power on  
**Duty cycle:** Max. 200,000 pages per month, max. average 55,000 pages per month  
**Power source:** AC 220 ~ 240 V, 50/60 Hz  
**Power consumption:** Printing: 710 W, Stand-by: 160 W, Power-Saving (ECOpower): 4.5 W  
**Noise (ISO 7779):** Printing: 51 dB(A), Stand-by: 37 dB(A), Power-Saving (ECOpower): Immeasurably low  
**Dimensions (W x D x H):** 599 x 646 x 615 mm  
**Weight:** Main unit: Approx. 68 kg  
**Certifications:** TÜV/GS, CE, PTS  
This product is manufactured according to ISO 9001 quality standard and ISO 14001 environmental standard.

### PAPER HANDLING

All mentioned paper quoted are based on a paper thickness of max. 0.11 mm. Please use paper recommended by Kyocera under normal environmental condition.

**Input capacity:** 2 x 500-sheet universal paper cassette, 60-105g/m<sup>2</sup>, A3, A4, A4R, A5R, B4, B5, B5R, Letter, Letter-R, Legal, Ledger, Folio, STMT  
200-sheet multi-purpose cassette, 45-200g/m<sup>2</sup>, A3-A6R, Custom (88 x 148 mm to 297 x 450 mm)  
Max. input capacity with optional paper feeder PF-750: 4,200 sheets  
Duplex as standard supports A3, A4, A4R, A5R, B4, B5, B5R, Letter, Letter-R, Legal, Ledger, 60-80g/m<sup>2</sup>  
**Output capacity:** 500 sheets face-down

### CONTROLLER

**Processor:** PowerPC 750FL / 600MHz  
**Memory:** Standard 64MB + ECOMemory, max. 576MB (1 DIMM slot)  
**Emulations:** PCL6/PCL5e incl. P/L, PostScript 3™ (KPDL 3), KC-GL (HP-7550A), PDF direct printing, automatic emulation sensing (AES), Line Printer, IBM Proprinter X24E, Epson LQ-850, Diablo 630  
**Controller language:** PRESCRIBE IIe  
**Fonts:** 80 outline fonts (PCL), 136 PostScript Fonts, 1 bitmap font, 45 types of one-dimensional barcodes plus two-dimensional barcode PDF-417  
Downloadable fonts: Kyocera, PCL + TrueType format, Type 1 + 3 format  
**Print features:** eMPS – job management functionality with optional hard disk HD-5 for quick copy, proof and hold, private print and job storage  
100 department codes for Accounting, PDF direct printing via USB Flash memory device, professional finishing capabilities

### INTERFACE

**Standard interface:** Fast Ethernet 10/100Base-TX, High speed bi-directional parallel (IEEE 1284), USB 2.0 (Hi-Speed), USB Host Interface dedicated for USB Flash Memory device, KUIO-LV option interface slot  
**Multiple interface connection (MIC):** Allows simultaneous data transfer via up to four interfaces, with each interface having its own virtual printer.

### OPTIONS

#### Paper handling

**PF-700 Paper feeder:** 2 x 500 sheets, 60-105g/m<sup>2</sup>, A3, A4, A4R, A5R, B4, B5, B5R, Letter, Letter-R, Legal, Ledger, Folio, STMT

**PF-750 Paper feeder:** Max. 3,000 sheets, 60-105g/m<sup>2</sup>, A4, B5, Letter

#### DF-710 Document finisher + AK-705\*:

Main tray: Max. 3,000 sheets A4 or 1,500 sheets A3 face-down, 60-200g/m<sup>2</sup>, A3-B5, Sub tray left: Max. 200 sheets A4 or 100 sheets A3/B4 face-up, 45-200g/m<sup>2</sup>, A3-A6R, Sub tray right: Max. 50 sheets A4 face-up, 45-200g/m<sup>2</sup>, A4-A6R, Stapling: Max. 50 sheets A4 or 30 sheets A3, stapling at 3 positions

**BF-710 Booklet unit for DF-710:** Max. 64 pages (16 sheets) booklet folding and stapling, 60-80 g/m<sup>2</sup>, cover sheet 60-200g/m<sup>2</sup>, A3, B4, A4R

**PH-5C/PH-5D Punch unit for DF-710:** A3-A5R, 45-200g/m<sup>2</sup>, 2-hole/4-hole/Swedish type

**MT-710 Mailbox for DF-710:** 7 bins, 60-80g/m<sup>2</sup>, A3-A5R, 7 bins x 100 sheets A4 or 50 sheets A3/B4

**DF-730 Document finisher + AK-705\*:** Max. 1,000 sheets A4 or 500 sheets A3/B4, 64-128g/m<sup>2</sup>, A3-B5, one position stapling max. 30 sheets A4 or 20 sheets A3/B4, 64-80g/m<sup>2</sup>

**CB-700 Cabinet (W x D x H):** wooden desk with storage capacity

**CB-710 Cabinet (W x D x H):** metal desk with storage capacity

\*Adapter-Kit AK-705 is required for the use of DF-710/DF-730 document finisher.  
The use of the hard disk HD-5 or extended RAM-Disk size is highly recommended to achieve full document finisher functionality.

#### Memory

**Printer memory:** 1 DDR SDRAM DIMM slot (64, 128, 256 or 512MB)

**CompactFlash® card:** 1 slot (up to 2GB), forms, fonts, logos, macro storage

**HD-5 Hard disk:** 40GB, storage of data, forms, fonts and job management

**Data security kit C:** Overwrite and encryption of HD-5

**USB Flash Memory:** Supports PDF direct printing via USB Host Interface

### Optional interface

**IB-23 Network card:** 10Base-T/100Base-TX

**SB-70 Network card:** Wireless LAN – IEEE 802.11b

**SB-110FX Network card:** 10Base-T/100Base-TX/100Base-FX, FibreOptic

**SB-110 Network card:** 10-Base-T/100Base-TX

**IB-11 Serial interface:** RS-232C serial interface (max. 115.2 kbps)

### CONSUMABLES

**TK-710 Toner-kit:** Microfine toner for 40,000 pages in accordance with ISO/IEC 19752

Capacity of starter toner is 20,000 pages in accordance with ISO/IEC 19752

### MAINTENANCE

**MK-710 Maintenance-kit:** 500,000 pages

### WARRANTY

2-year warranty as standard. Kyocera guarantees the drum and developer for 3-year or 500,000 pages (whichever occurs sooner), provided each printer is used and cleaned in accordance with the service instructions.

**KYO LIFE**

The up to 5-year on-site warranty extension for printer and options. The warranty is limited to 2 million pages (3 million pages with KYOLIFE).



### Select your options to suit your needs:

Document finisher (DF-730)



Paper feeder (PF-700)

Product depicted includes optional extras

Your Kyocera Business Partner:

KYOCERA MITA Europe B.V., Hoeksteen 40, 2132 MS Hoofddorp, The Netherlands, Tel +31 (0) 206540000, Fax +31 (0) 206531256, www.kyoceramita-europe.com, info@kyoceramita-europe.com

KYOCERA MITA Corporation, 2-28, 1-Chome, Tamatsukuri, Chuo-Ku, Osaka 540-8585, Japan, www.kyoceramita.com

Kyocera does not warrant that any specifications mentioned will be error-free. Specifications are subject to change without notice. Information is correct at time of going to press. All other brand and product names may be registered trademarks or trademarks of their respective holders and are hereby acknowledged.

**KYOCERA**